



#1 – Synagro pelletizer building sign.



#2 – View of smoke emanating from pelletizer building.



#3 – Looking at east side of pelletizer building. Smoke emanating from building. Water runoff observed from firefighting activities.



#4 – Another view of smoke emanating from the building.



#5 – View of water in first floor of pelletizer building.



#6 – View of contaminated water exiting the pelletizer building.



#7 – View of contaminated water flowing away from building along pavement.



#8 – View of fire truck hooked up to fire hydrant and potable water flowing out of truck onto the pavement.



#9 – Contaminated water continues to flow along pavement down towards truck loading building.



#10 – Some of the contaminated water leaves the pavement and flows onto a vegetated area and into a culvert.



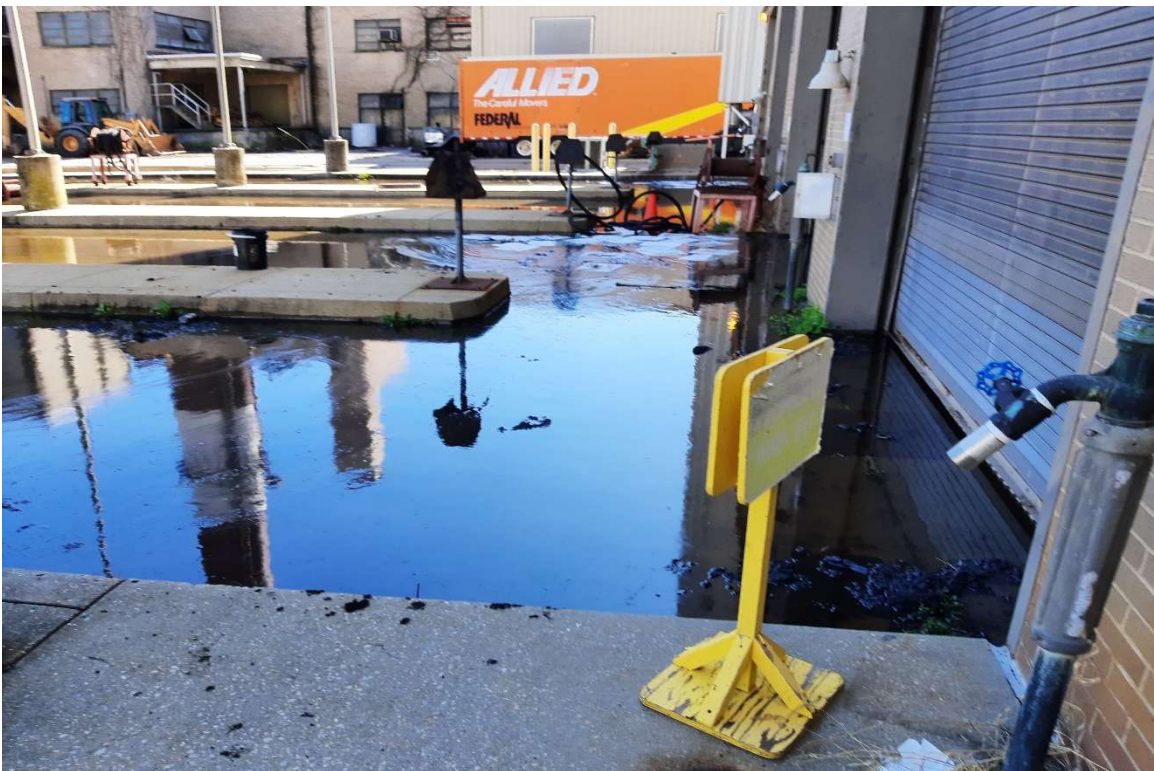
#11 – More contaminated water entering a drainage channel to a culvert.



#12 – The culvert discharges to a wetland area that is adjacent to Bread & Cheese Creek.



#13 – View of contaminated water as it flows down to the rear of the truck loading building.

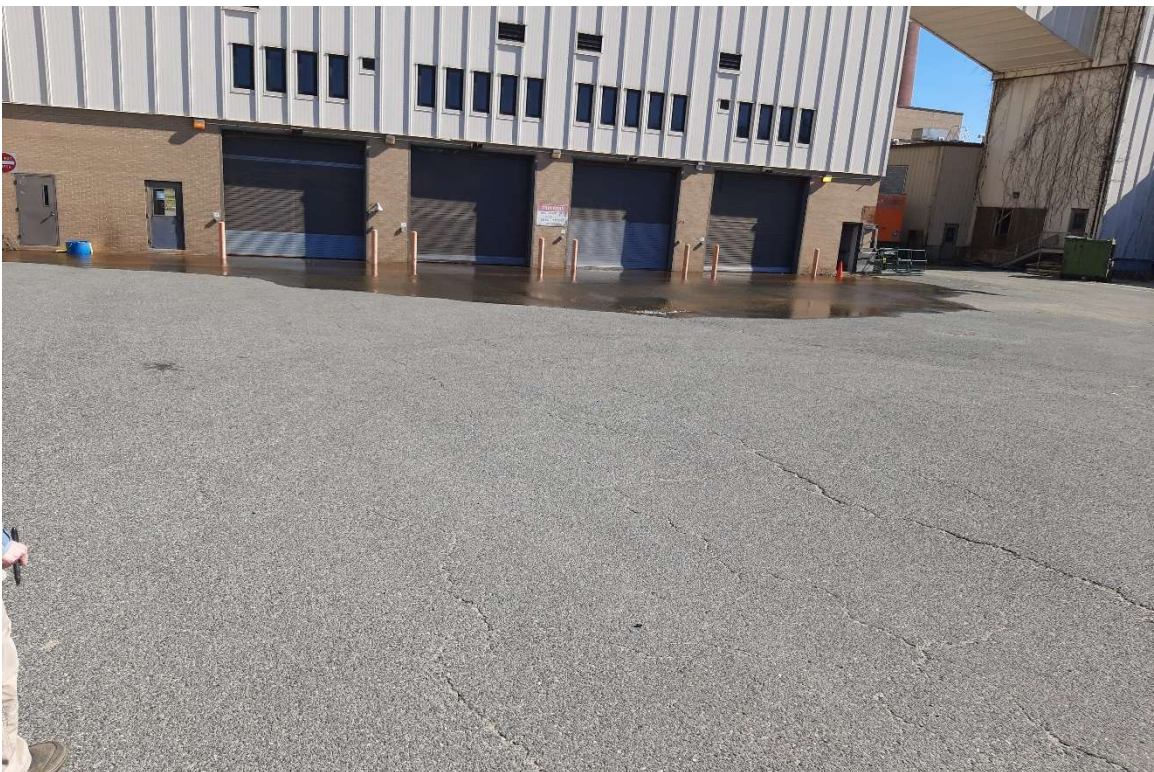


#14 – View of contaminated water at the rear of the truck loading building. There are trench drains beneath the water.





#15 – Contaminated water inside the truck loading building.



#16 – Looking at the front of the truck loading building where the water has exited the building and is entering a storm drain inlet.



#17 - View of contaminated water.