



Greys and Coke Point Landfill Update



**Public Meeting
June 24, 2010**





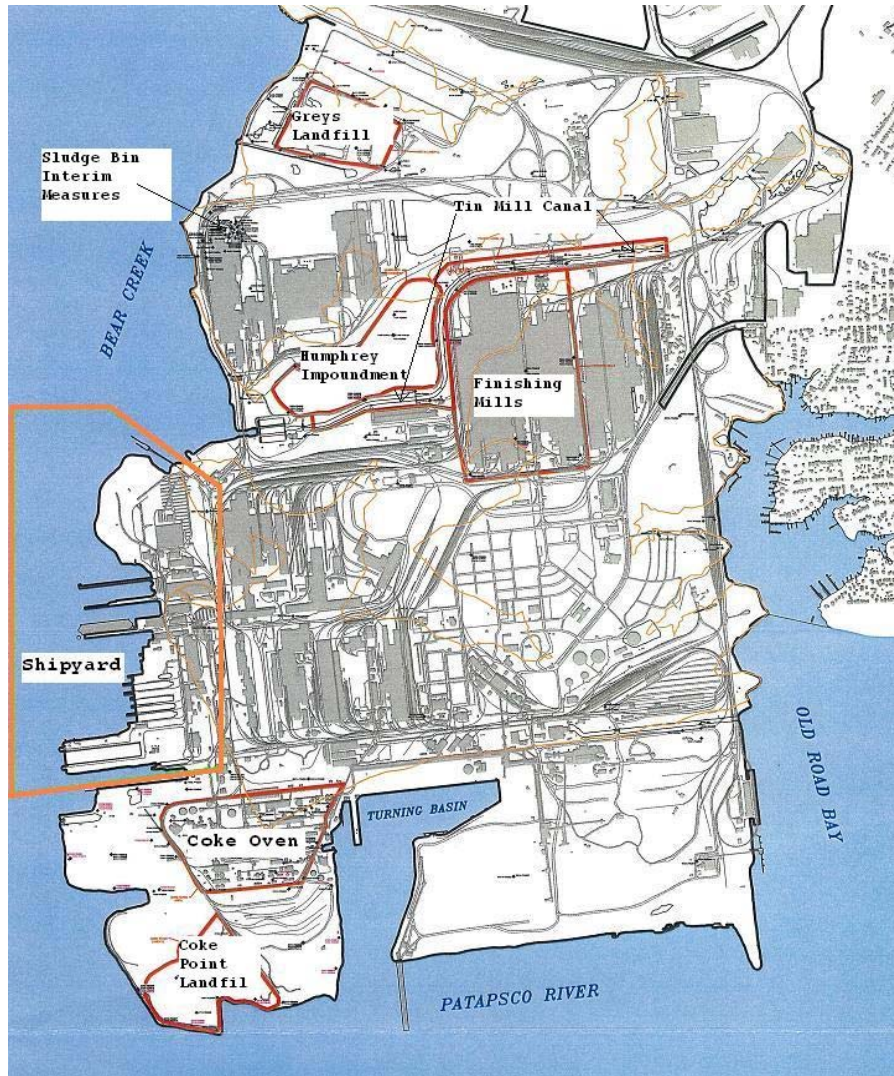
1997 Consent Decree Landfill Compliance Section

- **Defined Acceptable Wastes**
- **Asbestos Disposal Procedures (Greys Only)**
- **Waste Inspection Procedures**
- **Required an Engineering Study**
- **Required an Operations Manual**
- **Required Groundwater Monitoring**
- **Required a Post Closure Plan**





Greys Landfill



40 Acres Historically used for Disposal of :

- Oily Sludge
- Asbestos-Bearing Waste
- Waste Water Treatment Plant Sludge
- Blast Furnace/Centrifuge Cake
- Open Hearth Air Pollution Control Dust
- BOF Filter Press Cake
- Spill Clean Up Material
- Waste Sand Blasting Material
- Tin Mill Canal Dredge Spoil

1.5 Acre Hazardous Waste Cell

Operated 1980-1983 Closed Late 1983

- Coal Tar Decanter Sludge
- Iron and Brass Foundry Dusts
- Wire Mill Leach Plant Filter Cake





Greys Landfill

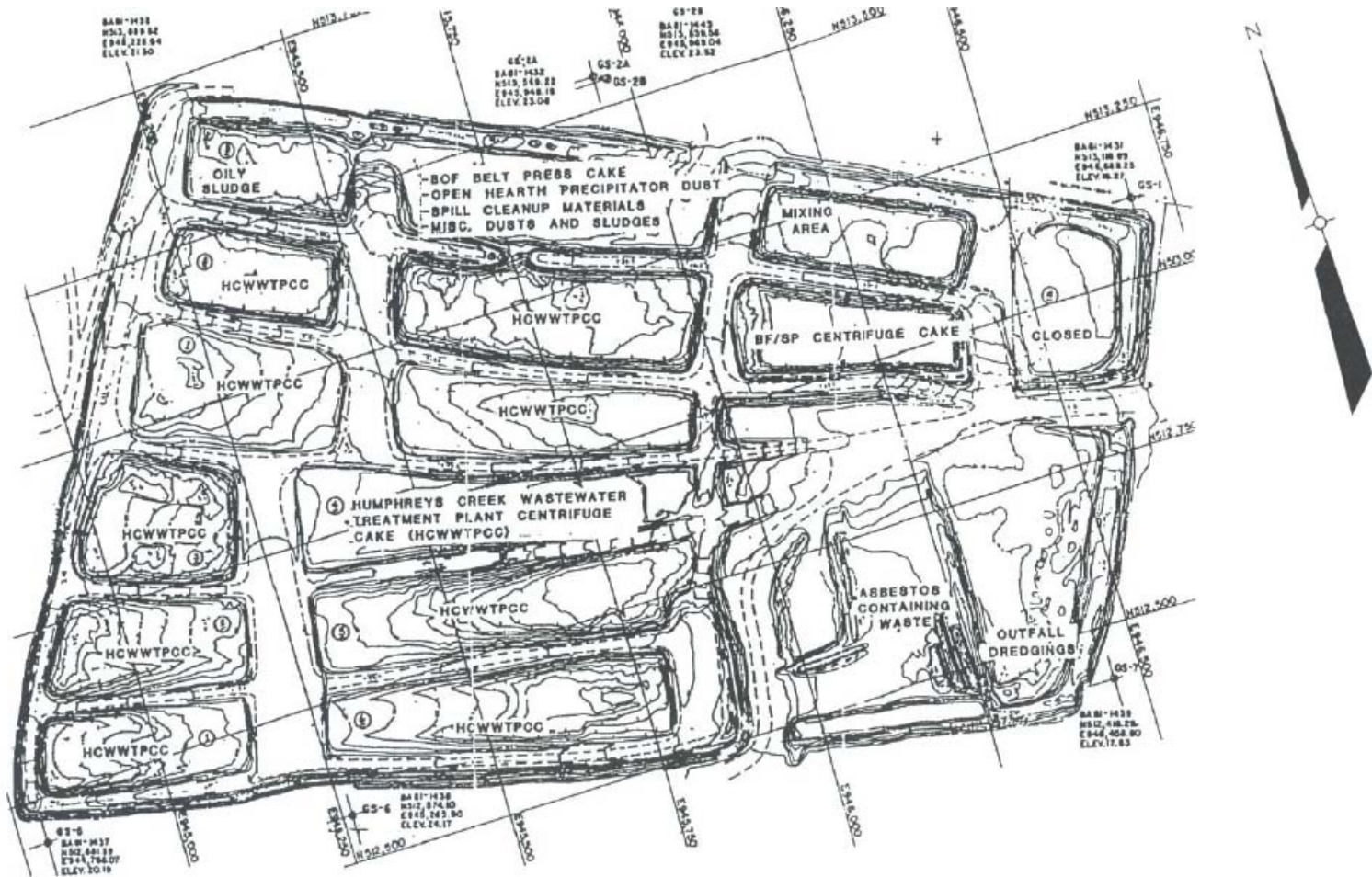
Currently Receives:

- Waste Water Treatment Plant Sludge
- Reladle Baghouse Dust
- Desulfurizer Baghouse Dust
- Slag Skimmer Baghouse Dust
- Caster Baghouse Dust
- Asbestos
- BOF Filter Cake
- Sinter Plant Sludge
- Limestone
- Dirt/Rubble
- Brick
- Other Solid Waste





Greys Landfill Historical Conditions





Greys Landfill Stabilization

- Prior to Consent Decree Waste Disposal Occurred In Impoundment Cells Surrounded by Slag Dikes with Steep Slopes
- Engineering Studies Conducted and Plans Submitted to MDE, Baltimore County Soil Conservation District and Army Corp of Engineers for approval.
- Work Began in 2005 and Completed in 2008
 - Sediment/Stormwater Basins
 - Stormwater Swales
 - Cement Deep Soil Mixing
 - Landfill Counter Berms and Slope Regrading
 - Final Cap System to Elevation 85
 - Seeding and Slope Stabilization
- Benching will Continue In Accordance with Plans
- Final Closure Elevation 141 Feet above Grade.





Greys Landfill Stabilization





Greys Landfill Stabilization





Greys Landfill



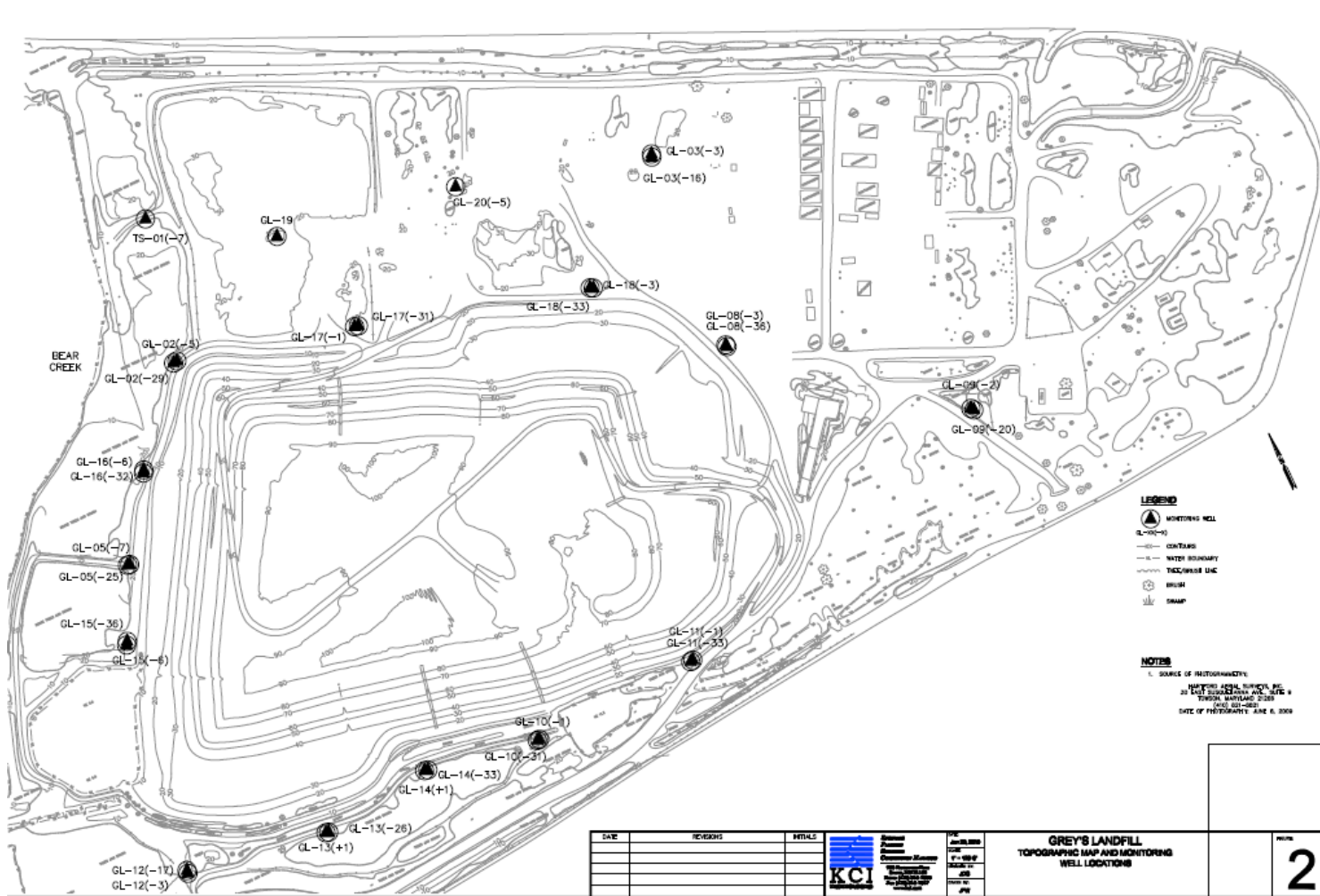


Greys Landfill Monitoring Well Installation





Greys Landfill Monitoring Well Network





Coke Point Landfill

Approximately 41 Acres
Constructed on Slag Fill

Historically Received:

- Foundry Waste
- Waste Sand
- Sinter Plant Grit
- Kish
- A Battery Baghouse Dust
- Slag and Refractories
- Railroad Car Cleaning Materials

Currently Receives:

- Scrap Lances
- Debris
- Caster Scale
- Brick



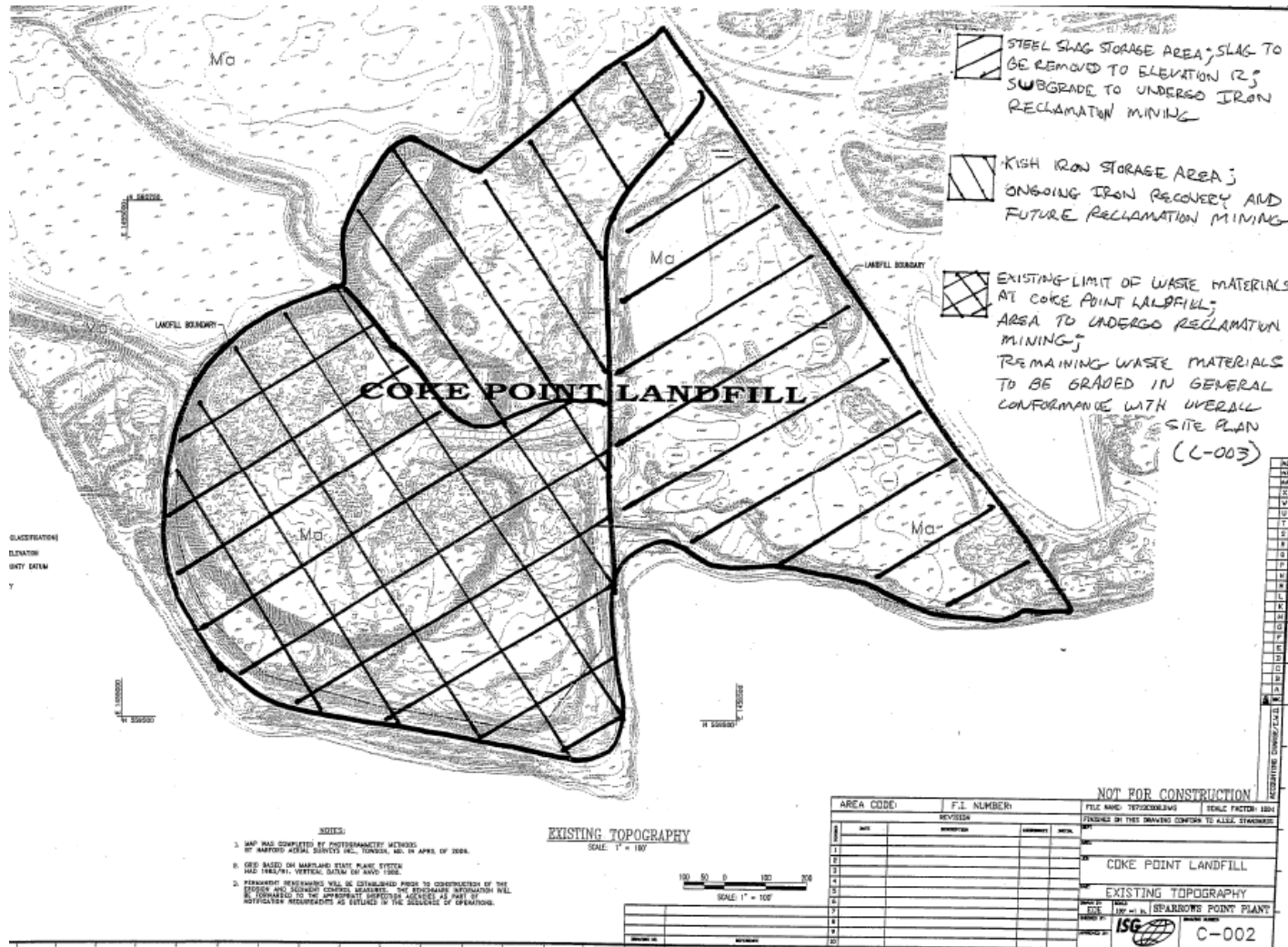


Coke Point Landfill Shore Line





Coke Point Landfill Recycling Effort





Sparrows Point Works Landfill

- **Phase 1 Landfill Permit Application received June 17, 2010**
- **Proposed location 60 acre site next to existing Greys Landfill (exact size of landfill to be determined)**
- **5,000,000 cubic yards landfill capacity**
- **Accept non-hazardous industrial waste from activities occurring at Sparrows Point**





Proposed New Landfill Location





COMAR 26.04.07.19

Nonhazardous industrial solid waste may only be landfilled in a facility which possesses a functional liner and leachate collection system

